

*Visit of*  
HER MAJESTY QUEEN ELIZABETH II  
*and*  
HIS ROYAL HIGHNESS  
THE DUKE OF EDINBURGH  
*to Victoria*

ITINERARY OF THE ROYAL TRAIN  
MARCH 1954

*Visit of*

HER MAJESTY QUEEN ELIZABETH II

*and*

HIS ROYAL HIGHNESS  
THE DUKE OF EDINBURGH

*to Victoria*

ITINERARY OF THE ROYAL TRAIN

MARCH 1954

# WEDNESDAY, MARCH 3, 1954

## 12.15 p.m. ... Arrive at Sale railway station and entrain.

Sale, one of the principal towns in east Gippsland, was originally an important shipping port for steamers plying on the Gippsland Lakes. At East Sale, the Royal Australian Air Force has one of the largest and most important of its stations in Australia.

## 12.20 p.m. ... Depart Sale. Lunch on train.

Shortly after leaving Sale, the Thomson River is crossed. Between Sale and Morwell, the country passed through is devoted principally to grazing and dairying.

## 1.40 p.m. ... Arrive Traralgon.

Traralgon will be the terminus of the electrified Gippsland railway from Melbourne. Work on duplication and electrification as far as Warragul is now well advanced.

## 2.10 p.m. ... Depart Traralgon.

Near Morwell (2.18 p.m.) a spur line on the right branches north to Maryvale where a mill makes paper pulp from eucalypts. Approaching Morwell, there is seen, to the south, the State Electricity Commission's new works on the Latrobe valley brown coal field, and, to the north, a large housing estate built by the Victorian State Housing Commission.

At Morwell (2.24 p.m.) a drill proved a brown coal seam to be 810 feet thick. It is the largest known seam in the world.

The train runs for about half a mile on a temporary deviation while the main line is being lowered for a grade separation at Morwell goods yard.

At Herne's Oak (2.40 p.m.) the train leaves the main line to follow a branch line to Yallourn.

## 2.50 p.m. ... Arrive Yallourn.

Yallourn is the present centre of the State Electricity Commission's work in the Latrobe valley. An estimated field of 27 thousand million tons of brown coal a few feet below ground surface is being mined from a huge open-cast (open-cut it is called in Australia) and converted into electricity and briquettes for consumption all over the State.

## 4.05 p.m. ... Depart Yallourn.

After rejoining the main line at Herne's Oak, the train passes through the Haunted Hills, so named because the drumming produced by the movement of herds of cattle caused many stampedes.

At Moe (4.24 p.m.) a new spur line from Yallourn joins the main line on the right. It was built to overcome the longer distance and heavy grades of the old line through Herne's Oak. Between Moe and Warragul, mountain ranges appear on both sides of the railway. On the south are the Strzelecki Ranges, named after a Polish count who was one of the pioneers of Gippsland, which divide north

*State school  
and public  
gardens,  
Sale*



*On the  
outskirts of  
Traralgon*



## WEDNESDAY, MARCH 3, 1954—*continued.*

and south Gippsland. They contain some of the richest dairying country in Victoria. North of the line are the Baw Baw Mountains, one of the sources of Melbourne's water supply, while further north is the Victorian alpine region rising to 6,000 feet.

Between Trafalgar (4.32 p.m.) and Yarragon (4.42 p.m.) the speed of the train is restricted because of work on the duplication of the track and the building of new bridges.

### **4.55 p.m. ... Arrive Warragul.**

Warragul is one of the principal towns in eastern Victoria. North of the line there is a large housing estate built by the State Housing Commission. South is the Victorian Railways housing estate and the new power operations room which will control all the electrical sub-stations along the line. It is expected that electric trains will be running between Melbourne and Warragul by May, this year.

### **5.25 p.m. ... Depart Warragul.**

Between Warragul and Drouin (5.32 p.m.) the "up" railway line to Melbourne has been regraded to enable heavy coal trains to be hauled from Yallourn without assisting engines. The old line, which is now used for "down" traffic from Melbourne, has not been regraded. Trains run along the newly constructed welded track as far as Longwarry (5.39 p.m.).

Between Warragul and Dandenong (6.32 p.m.) the route is through rich and undulating grazing, dairying and fruit growing country. From Tynong (5.54 p.m.) to Nar Nar Goon (5.59 p.m.) track duplication has been finished and the train is again running over a new line. Between Nar Nar Goon and Pakenham (6.06 p.m.) work is nearly finished; while from Pakenham to Dandenong work is in progress nearly all the way. Near Beaconsfield (6.15 p.m.) the Lysterfield Hills and, in the background, the Dandenong Ranges, become prominent to the north of the railway. Approaching Dandenong (6.32 p.m.) one of the features is the large area laid out in testing tracks by General Motors-Holden's. Other large industrial enterprises, visible from the train, are the Heinz Company's processing and canning factory and the International Harvester Company's assembly plant.

Dandenong (6.32 p.m.), known as the "gateway to Gippsland," is a junction at which rail and road systems branch to central and south Gippsland. It is an important marketing centre and is the present terminus of the Melbourne electrified railway.

After passing Dandenong, the line is within sight of an area now being converted by the Melbourne Racing Club into Australia's most up-to-date racecourse.

At Caulfield (6.49 p.m.) on the south side of the line, is Caulfield Racecourse, headquarters of the Victorian Amateur Turf Club, Melbourne, where the Caulfield Cup and other important racing fixtures are run.

### **7.05 p.m. ... Arrive (Flinders Street station).**

Flinders Street station, terminus of the suburban and Gippsland lines, is one of the world's busiest railway stations.

*Broken coal  
open cut,  
Yallourn*



*Soldiers'  
memorial,  
Warragul*



## THURSDAY, MARCH 4, 1954

**5.50 p.m. ... Depart Melbourne (Spencer Street station). Dinner on train.**

The country between Melbourne and Seymour is largely used for grazing

Between Wallan (6.34 p.m.) and Kilmore East (6.47 p.m.) the line crosses the Great Dividing Range at a height of 1,145 feet.

**7.20 p.m. ... Seymour. Train will slow down.**

Seymour has considerable importance as a military town, and is the centre of mobilization stores and depots. Nearby is Puckapunyal Camp, the largest military training depot in the State. During the last war, several A.I.F. Divisions were trained here.

**9.15 p.m. ... Arrive Goorambat and stay overnight.**

## FRIDAY, MARCH 5, 1954

**9.25 a.m. ... Depart Goorambat.**

**10.00 a.m. ... Arrive Benalla.**

Benalla, on the Broken River, is one of the principal towns in north-east Victoria.

Near Benalla the mountains of north-eastern Victoria come into view. The profile of the Mt. Buffalo plateau, one of Australia's most famous tourist resorts, is unmistakable with its two outstanding features, The Hump in the centre and The Horn at the end. In the background are the peaks of the Victorian Alps.

**10.30 a.m. ... Depart Benalla, by car, for Shepparton.**

**12.45 p.m. ... Arrive Tatura and rejoin train.**

**12.50 p.m. ... Depart Tatura. Lunch on train.**

The area between Tatura and Echuca is devoted to intense irrigation culture, the key to which is the Goulburn Irrigation Scheme with its network of channels 250 miles in over-all length.

The development of the fruit canning industry underlines the success of irrigation in the Goulburn Valley. The canneries at Shepparton, Ardmona and Kyabram processed, during the 1953 season, 50 million tins of fruit which represented 44% of the Australian output.

Between Merrigum (1.00 p.m.) and Kyabram (1.15 p.m.) a main irrigation channel from the Waranga Reservoir is crossed, and between Kyabram and Tongala (1.32 p.m.) the Deakin channel from the same reservoir is crossed.

**2.00 p.m. ... Arrive Echuca (Civic Hall platform).**

Echuca, at the junction of the Campaspe with the River Murray, is the centre of a large agricultural, pastoral, and fruit growing district.

*Public gardens,  
Benalla*



*Hare Street,  
Echuca*





## FRIDAY, MARCH 5, 1954—*continued.*

**2.20 p.m. ... Depart Echuca (Civic Hall platform).**

Between Echuca and Bendigo, the country is chiefly agricultural. Over this section, the railway follows the course of the Campaspe River which it crosses at Rochester. Wheat silos at various stations are evidence of the great quantity of grain grown in this area.

North of Rochester, the railway crosses the western main channel from the Waranga Reservoir. This channel runs for 100 miles westward and supplements the water supply in the Wimmera-Mallee area.

**2.50 p.m. ... Arrive Rochester.**

**3.05 p.m. ... Depart Rochester.**

**4.05 p.m. ... Arrive Bendigo.**

Bendigo's history dates back to the 1850's when gold was discovered on Bendigo Creek. The field was very rich, and for more than 70 years Bendigo's average annual production of gold was 200,000 ounces. The underground workings were at record depths. When goldmining declined, Bendigo turned to manufacturing and agriculture.

**5.20 p.m. ... Depart Bendigo.**

The country between Bendigo and Castlemaine is devoted largely to agriculture and fruit growing. The district around Harcourt (5.46 p.m.) is famous for its cherries, apples, apricots, peaches and pears. To the east of the line is Mt. Alexander, which yields the famous Harcourt granite.

**5.55 p.m. ... Arrive Castlemaine (No. 1 platform).**

Castlemaine was also an important goldmining district, but today engineering and fruit growing have taken the place of mining.

**6.15 p.m. ... Depart Castlemaine (No. 2 platform).**

Between Castlemaine and Maryborough is a pretty stretch of hilly country. It was originally occupied as a cattle station by the pioneering Simpson brothers who "squatted" there in 1840.

Gold was discovered in the district in 1854. A rush followed and there were phenomenal yields. The biggest nugget found in the district weighed 1,034 ounces.

**7.20 p.m. ... Arrive Maryborough.**

Maryborough, originally a mining township, is now an important industrial town and the centre of agricultural and grazing country.

**7.40 p.m. ... Depart Maryborough. Dinner on train.**

Creswick (8.50 p.m.) another of the very rich goldfields, is now at the centre of a large State forest. A Government nursery, and the Victorian State Forestry School are there.

The Great Dividing Range is again crossed, at a height of 1,511 feet, between Creswick and Waubra Junction (9.10 p.m.).

**9.30 p.m. ... Arrive Ballarat racecourse platform. Stay overnight.**

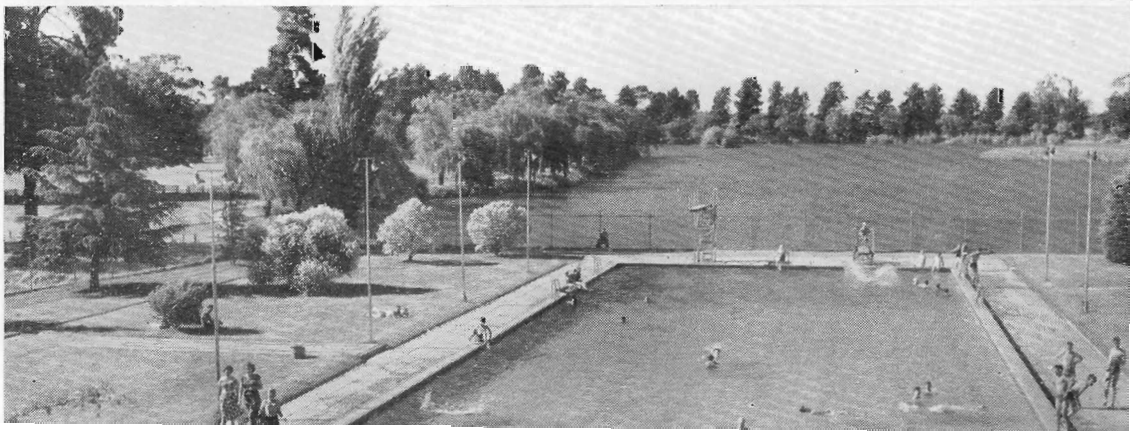
*Pall Mall,  
Bendigo*



*Barker Street,  
Castlemaine*



*Olympic pool  
and gardens.  
Maryborough*



# SATURDAY, MARCH 6, 1954

**9.35 a.m. ... Depart Ballarat racecourse platform.**

**10.00 a.m. ... Arrive Ballarat.**

Ballarat is the largest inland city in Australia. It began as a fabulously rich goldfield. One of the most famous nuggets found in the area, the "Welcome Nugget," weighed 175 lb. and consisted of 99.6% pure gold. Now a thriving city, it is the home of many industries, and is famous for its statuary, gardens and trees.

**11.15 a.m. ... Depart Ballarat. Lunch on train.**

The line from Ballarat to Geelong passes through varied pastoral and agricultural country. This was originally the main line to Ballarat from Melbourne. The principal point of interest from the train window is Mt. Buninyong, the cone of an extinct volcano.

**11.51 a.m. ... Meredith. Train will slow down.**

Glimpses of Corio Bay can be had as the train approaches Geelong; also of the Grain Elevator Board's silos. The silos have a storage capacity of four and a half million bushels of bulk wheat. Overhead conveyors can load ships at the rate of 1,600 tons an hour.

**1.10 p.m. ... Arrive Geelong.**

Situated on Corio Bay, Geelong is the largest provincial city in Victoria. A great deal of its prosperity has been derived from the wool industry.

**2.25 p.m. ... Depart Geelong.**

From Geelong, the line follows the shore of Corio Bay for some miles. Near Corio (2.34 p.m.) are the Geelong Grammar School, one of Australia's "Harrow," and the Shell Company's refinery which is costing £5 million to build.

After Corio, the line swings away from the coast, passing the You Yangs mountains. In the background are the Anakie Ranges.

Near Little River (2.46 p.m.) is the Avalon military aerodrome, which the Commonwealth Government has built for the use of modern high-speed jet aircraft. It has the longest runway in Australia; with over-run it is 10,000 feet.

After passing Werribee (2.56 p.m.) points of interest are the State Agricultural Research Farm, on the right, and the R.A.A.F. centre at Laverton, on the left.

**3.05 p.m. ... Arrive Aircraft siding platform, Laverton.**

**4.35 p.m. ... Depart Aircraft siding platform, Laverton.**

Approaching Newport (4.45 p.m.) visible are the Commonwealth Oil Refineries (on left), Standard Vacuum Oil Company (on right), the State Electricity Commission's briquette store (on left) and the Newport Railway Workshops (on right).

*Sturt Street,  
Ballarat*



*City Hall,  
Geelong*



SATURDAY, MARCH 6, 1954—*continued.*

**4.58 p.m. ... Arrive Melbourne (Spencer Street station).**

**4.59 p.m. ... Depart Melbourne (Spencer Street station).**

After passing through Flinders Street station (5.04 p.m.) and Burnley (5.10 p.m.) the River Yarra is crossed. Near Glenferrie (5.13 p.m.) Xavier, a large Roman Catholic boy's public school, may be seen on the left.

**5.26 p.m. ... Box Hill. Train will slow down.**

Approaching Ringwood (5.40 p.m.) the Dandenong Ranges come into view on the south or right of the line. These ranges, which reach a height of 2,077 feet at Mt. Dandenong, are one of Melbourne's most popular hill playgrounds.

**5.40 p.m. ... Ringwood. Train will slow down.**

**5.45 p.m. ... Croydon. Train will slow down.**

As Lilydale is approached, Mitchell's lime quarry comes into view, south of the line. Many fossils and other evidence establish its origin as a sea bed.

**6.03 p.m. ... Lilydale. Train will slow down.**

Lilydale was the Australian home of the famous soprano, Dame Nellie Melba. Her house is still retained by members of her family.

To the north of the line can be seen the Christmas Hills. Cut into the side of the hills is the water channel from the Maroondah Reservoir. The course of the channel may be traced by the pine trees lining it.

The line passes through country devoted almost entirely to fruit and flower growing.

At Killara (6.35 p.m.) the ranges surrounding the headwaters of the River Yarra come into view. The highest point, Mt. Donna Buang (4,080 feet), is snowcapped in winter and a popular ski-ground.

Launching Place (6.50 p.m.) acquired its name in the early days when an extensive transport system by flat-bottomed boats plied the River Yarra from there.

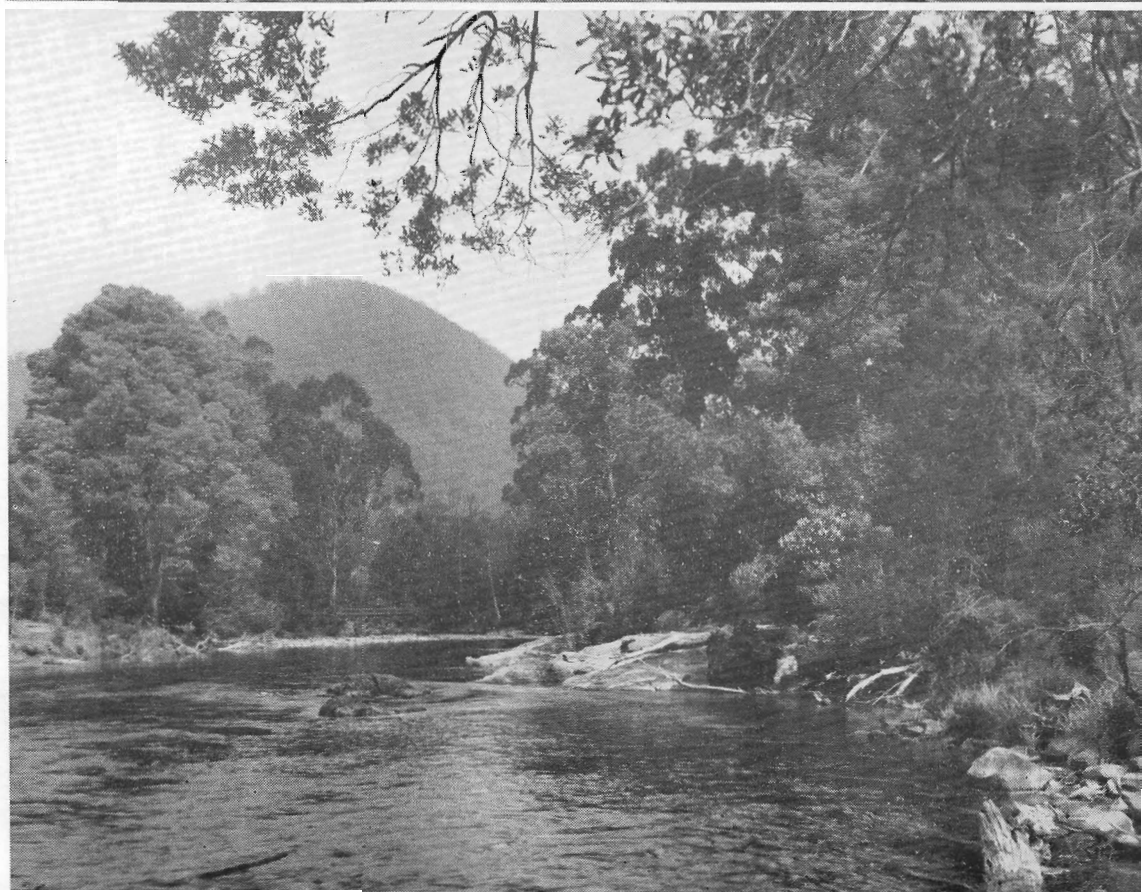
**7.10 p.m. ... Arrive Warburton.**

Centre of a popular hill holiday resort, Warburton is also the centre of an important sawmilling industry. The town dates from the pioneering days when gold was discovered in the Upper Yarra region, and miners set out from the present township with packhorses.

*Spencer Street  
station and  
goods depot,  
Melbourne*



*River Yarra,  
Warburton*



ISSUED BY  
THE VICTORIAN RAILWAYS COMMISSIONERS

VICTORIAN RAILWAYS PRINT.